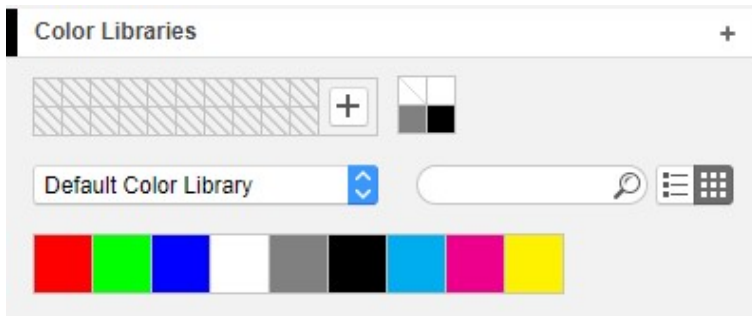
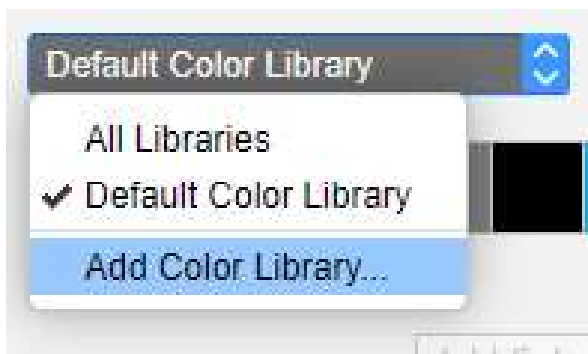


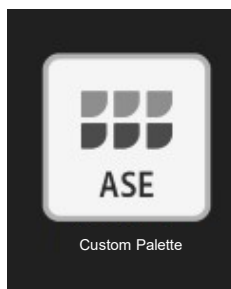
ADDING A COLOR PALETTE – VSITCHER & LOTTA



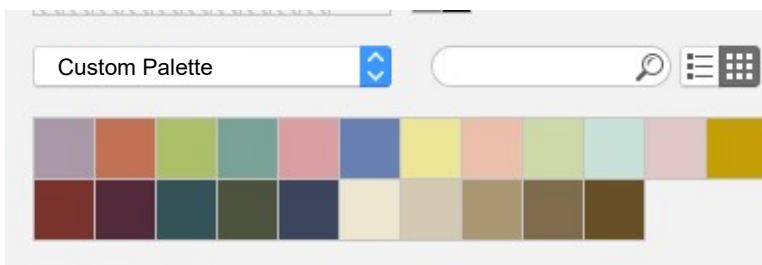
- ▶ Navigate to the Color Libraries section of the Materials Tab to bring in a Seasonal Color Palette



- ▶ Select: Add Color Library...



- ▶ .ASE (Illustrator) and .ACO (Photoshop) Color Palette files can be used



- ▶ Color Palette will now be added to the .BW file and user's computer settings. The colors can be used with any Material